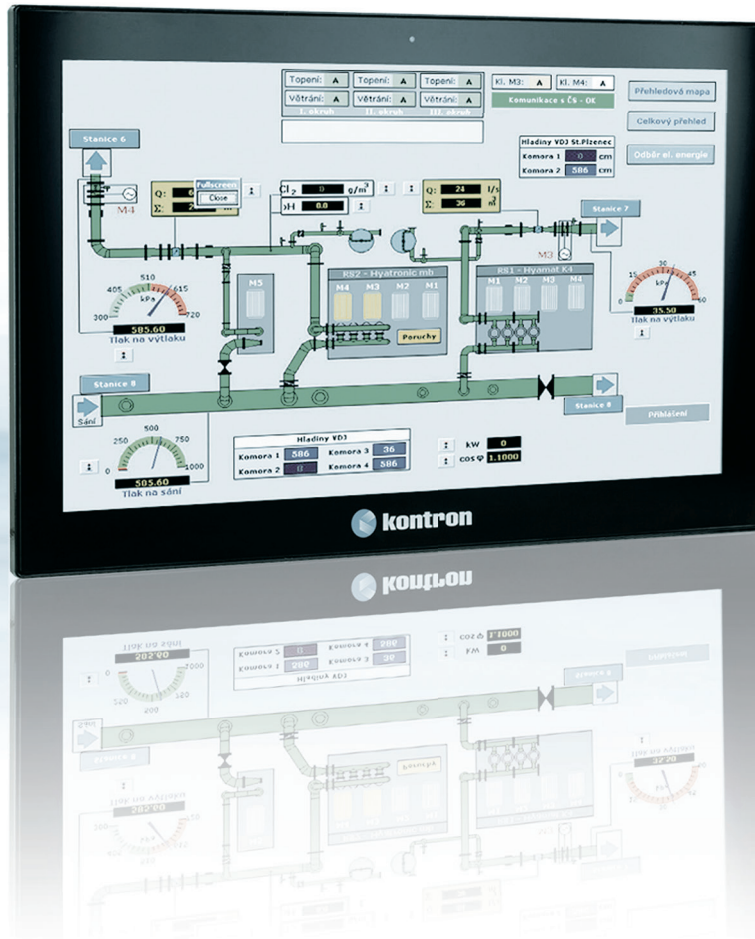


OmniView



A NEW DIMENSION OF VISUALIZATION & CONTROL

- ▶ designed for use as stand-alone monitor, connected to a PC or as 'Remote Solution'
- ▶ widescreen (16:9) display sizes (21.5", 18.5" and 15.6")
- ▶ VESA mounting pattern for easy attachment
- ▶ DVI input, DisplayPort and VGA inputs as standard

POSSIBILITIES START HERE

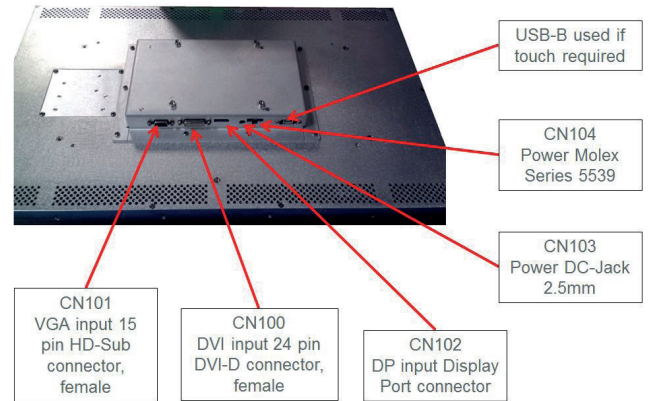


OMNIVIEW

A COMPLETELY NEW DIMENSION OF CONTROL, VISUALIZATION AND PERFORMANCE

Via the long distance interface for DVI-D and USB, the new OmniView industrial monitors can be installed at a distance of up to 30 meters (100 feet) from the host, which allows for extremely flexible GUI installations on machinery and shop floor scenarios. With its high luminance of up to 300cd and matt glass front, the monitors offer excellent readability – even in difficult lighting conditions. Depending on the monitor chassis, mounting options for the new industrial monitors in 21.5", 18.5" and 15.6" formats are either panelmount (installation) or Vesa mount (stand-alone). The monitors also boast a high level of connectivity. With USB for touchscreen control as well as DisplayPort, DVI-I and VGA connections they can not only be hooked up to the latest systems but also to legacy products.

The power supply is provided by a 24VDC connection. The new Kontron OmniView industrial monitors are specified for operating temperatures ranging from 0°C to 50°C.



TECHNICAL INFORMATION

DISPLAY	15.6"	18.5"	21.5"
RESOLUTION	1366 x 768	1366 x 768	1920 x 1080
BRIGHTNESS	300cd/m ²	300cd/m ²	300cd/m ²
TOUCH SCREEN	PCAP	PCAP	PCAP
WEIGHT	4.2Kg	4.5Kg	4.7 kg
DIMENSIONS (HXWXD)	10.29"x16.14" x 2.62" (261.4 x 410.0 x 66.5 mm)	12.34" x 18.94" x 2.62" (313.4 x 481.1 x 66.5 mm)	13.46" x 21.43" x 2.62" (341.4 x 544.3 x 66.5 mm)
COLOUR (FRONT)	Black		
MOUNTING	Panelmount or VESA		
STANDARD INTERFACES	1x VGA, 1x DisplayPort, 1x DVI-I		
POWER INPUT	24 VDC either Molex Connector 5539, or 2.5mm DC power jack		
COOLING	Fanless		
EMC	US:CFR47 FCC PART15; Class A level CE:EN55022; EN55024		
CERTIFICATIONS	CE, cULus		
PROTECTION CLASS	IP65 front		
ALTITUDE	Operating: 10000 ft (3.048m); Storage: 15000 ft (4.622m)		

CORPORATE OFFICES

EUROPE, MIDDLE EAST & AFRICA

Lise-Meitner-Str. 3-5
86156 Augsburg
Germany
Tel.: +49 821 4086 0
Fax: +49 821 4086 111
info@kontron.com

NORTH AMERICA

14118 Stowe Drive
Poway, CA 92064-7147
USA
Tel.: +1 888 294 4558
Fax: +1 858 677 0898
info@us.kontron.com

ASIA PACIFIC

1-2F, 10 Building, No. 8 Liangshuihe 2nd Street,
Economical & Technological Development Zone,
Beijing, 100176, P.R.China
Tel.: +86 10 63751188
Fax: +86 10 83682438
info@kontron.cn